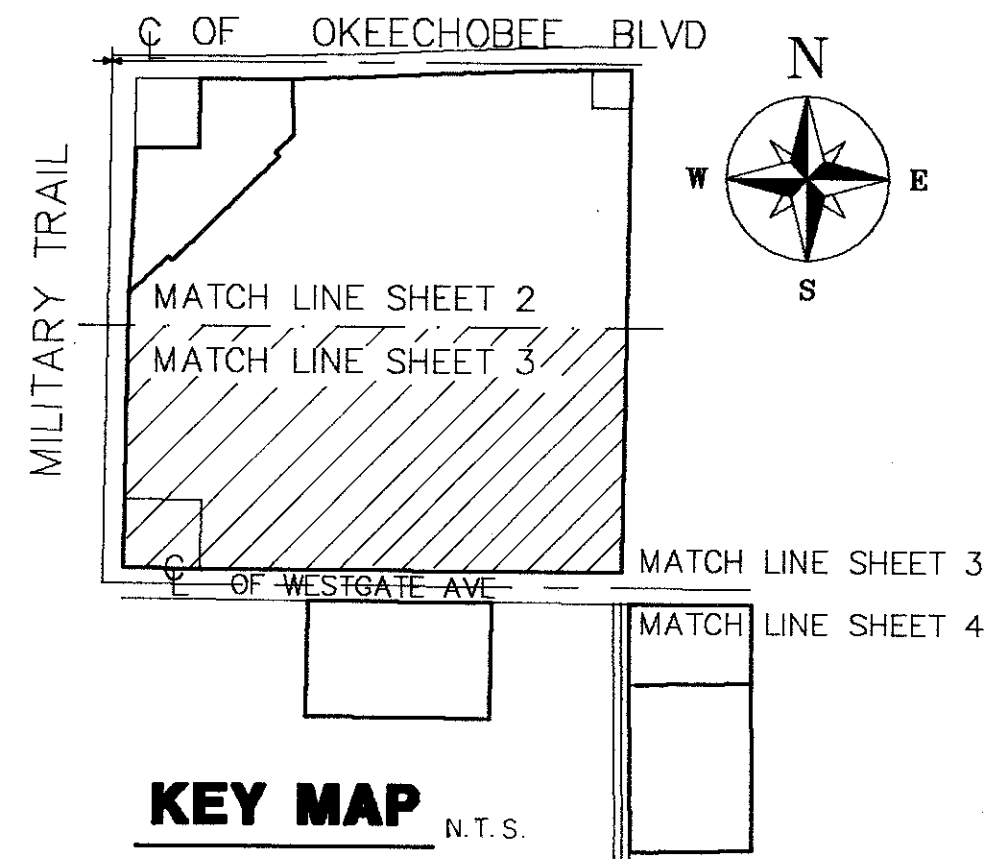
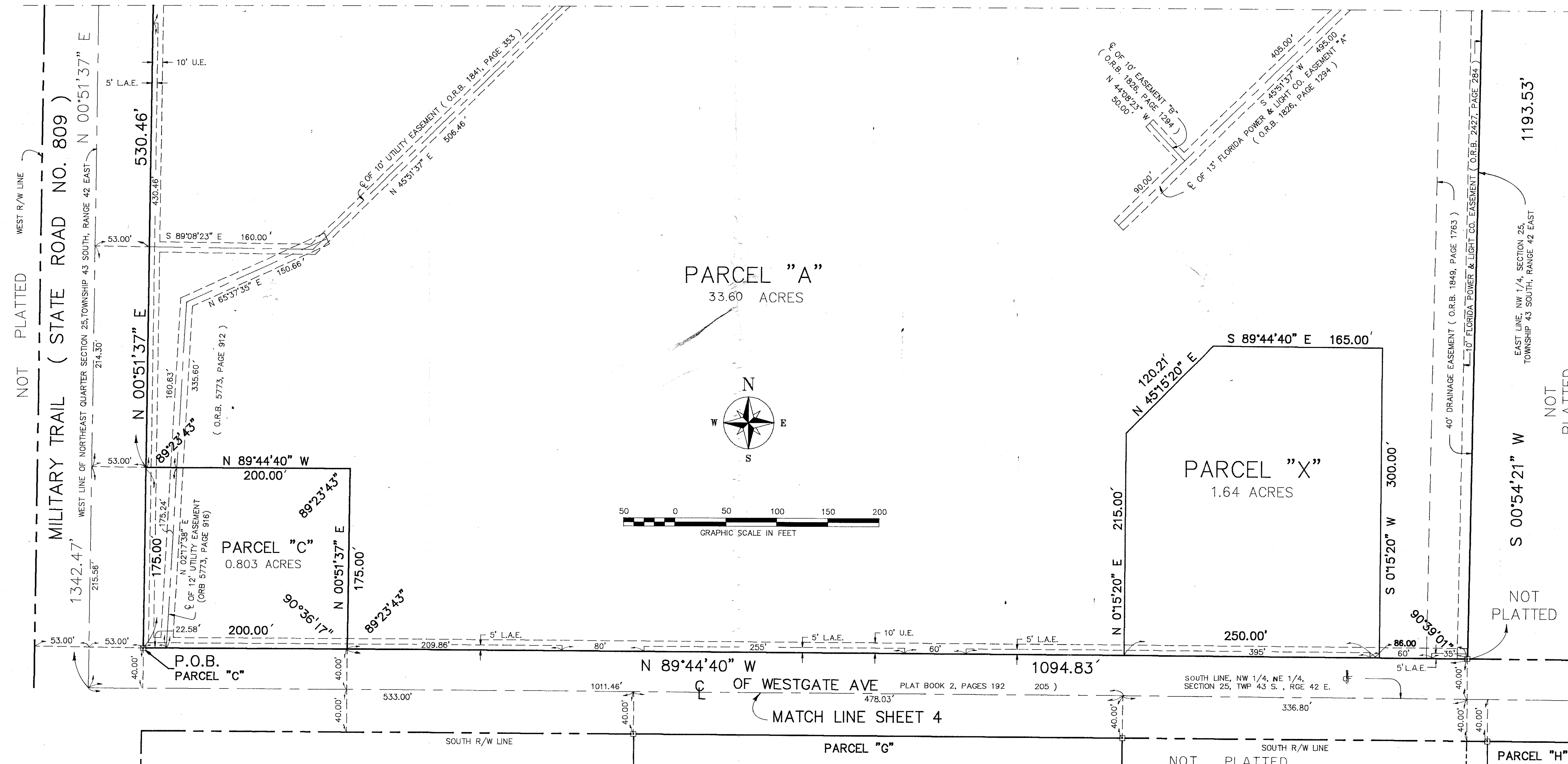


CROSS COUNTY MALL

BEING A SUBDIVISION OF LAND IN THE NORTHEAST QUARTER
(NE 1/4) OF SECTION 25, TOWNSHIP 43 SOUTH, RANGE 42 EAST
PALM BEACH COUNTY, FLORIDA
SHEET 3 OF 4 MAY, 1991



MATCH LINE SHEET 2



NOT PLATTED

MILITARY TRAIL (STATE ROAD NO. 809)

NOT PLATTED

NOT PLATTED

NOT PLATTED

Field Book No.	REO SURVEYORS, INC 4361 OKEECHOBEE BLVD. WEST PALM BEACH, FLORIDA	CROSS COUNTY MALL	Job No.	91-1003
Design			Scale	1" = 50'
Drawn			Date	MAY, 1991
Checked			Sheet	4
			of	3
	File No.	BF-2456		